



August 2023 Troop Scoop Back to Troop Edition

What's in this month's issue:

- S'more STEM Mobile Open House
- Volunteer Conference
- Fall Program Dates
- Solar Eclipse Camping
- Troop Trip Reminders
- Council Properties
- Career Opportunities
- Council Store Hours
- And so much more!



S'more S.T.E.M. Mobile Open House

Date: Saturday, August 26, 2023,
9:00 AM - 12:00 PM MDT

Location: Carlsbad Program Center
Join us for the unveiling of our new
S'more S.T.E.M. Mobile! There will be
hands on activities and tons of Girl
Scout fun!
FREE

Volunteer Conference at Camp Mitre Peak

We need your help to make this
Volunteer Conference the best ever!

WE NEED YOU!

*Volunteers who lead classes will receive a
registration discount. Send to info@gdsdw.org



Registration is now live - <https://bit.ly/VolConf2023>.

Dates: Friday, September 22, 2023, 7:00 PM - Sunday, September 24, 2023, 11:00 AM CDT

Location: Camp Mitre Peak

What is included: Saturday breakfast - Sunday breakfast, training supplies, lodging (bring your own sleeping bag/toiletries), camaraderie, Girl Scout friendships, and more!

Cost - \$60.00 (troop funds can be used as it a training weekend)

Who? - leader, co-leader, parent, or Girl Scout Volunteer of any kind (just need to be a currently registered Girl Scout member)

Product Program

Fall Program Dates

- Monday, July 31, 2023 - Service Unit Fall Product Chair training went live in gsLearn.
- Monday, August 7, 2023 - Troop/IRG Fall Product Coordinators training goes live in gsLearn.
- Thursday, August 31, 2023 - Fall Product Program season starts.
- Thursday, September 21, 2023 - In-person orders end.
- Saturday, September 23, 2023 - Online girl-delivery orders end.
- Saturday, October 21, 2023 to Sunday, November 2, 2023 - Bothing Period
- Sunday, November 5, 2023 - Online direct ship & magazine sales end.
- Sunday, November 5, 2023 - Fall Product Program season ends.
- Thursday, November 12, 2023 at 6:00 PM MST - Digital Camera Reward Class
- Saturday, November 18, 2023 at 10:00 AM MST - Digital Camera Reward Class

**OWN YOUR
magic**

2023 Cookie Reward Dates

- Friday, August 18 - Sunday, August 20, 2023 Cookie Camp at Fort Lone Tree, Capitan, NM



2024 Looking Ahead at Cookies

- Interested in helping troops during the Cookie Program?
- Want to make your own schedule?
- Enjoy counting?

We are looking for Council Cookie Cupboard helpers in El Paso, Midland, and Odessa. If interested, email info@gsdsw.org for more information.

Cookies 2.0

- Program credit will be printed and distributed when all payments are completed.
- Each troop/IRG will be notified when to pick up their credits from their local GS office.
- Email info@gsdsw.org if you have any questions.

Program

Tell Me About....Series Continues
**Thursdays, 5:30 PM - 6:30 PM MDT/
6:30 PM - 7:30 PM CDT**

Last in the Series: Don't forget to register! This free, virtual series is a fun and informative way to learn about Girl Scout programming.

Part 4 - Highest Awards, August 10, 2023

(Registration deadline August 7, 2023, at 5:00 PM MDT)

Don't let the name intimidate you. These awards (Bronze, Silver, and Gold) are the highest award a Junior, Cadette, and Senior/Ambassador can earn. There are a lot of questions about them, and we have the answers!

**PLEASE NOTE: IF YOU ARE REGISTERING FOR
SOMEONE OTHER THAN YOURSELF, PLEASE INCLUDE
THEIR EMAIL SO THEY WILL GET THE
CONFIRMATION EMAIL AND ZOOM LINK.**

Girl Scouts Love the Outdoors

Now that summer is here, it's the perfect time to keep Girl Scouts engaged during summer.

A NEW version of The Girl Scouts Love the Outdoors Challenge activity sheet is now available to provide a fun activity you can explore to keep the troop connected, with friends and family, or individually. This patch program is the suggested summer activity included in most of the Troop Year plans.



Girl Scouts Love State Parks

Date: Saturday, September 9, 2023

Visit https://bit.ly/GSUSA_SGLSP to

download the free activity sheet and visit any state park in the country!

Then purchase your GSLSP patch online or in the Girl Scout shop!



Virtual Troop
meeting schedules
are on the website.
Check it out!

August Monthly Challenge

SOLAR UNITED NEIGHBORS
SUN PATCH FOR GIRL SCOUTS



Girl Scouts of the Desert Southwest has partnered with Solar United Neighbors to bring you the August 2023 Monthly Challenge. Read the booklet, learn about solar energy, complete two activities, and submit your report.

Program



Upcoming Events "Save the Date"

Saturday, August 19, 2023 - PEARLS - El Paso (EPCC Northwest Campus) and Odessa (Program Center). Click to sign up.

Friday - Sunday, September 8 - 10, 2023
Girl Scouts Love State Parks

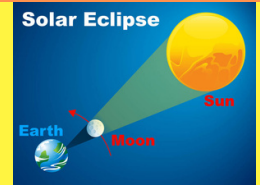
Friday - Sunday, September 22 - 24, 2023
Volunteer Conference - Camp Mitre Peak

Friday - Sunday, October 13 - 15, 2023
Solar Eclipse Camping - Camp Mitre Peak

Saturday, November 4, 2023
Lego Derby - Midland Program Center

Saturday, December 2, 2023
Ceremony of Honors for MY 22-23

Solar Eclipse at Camp Mitre Peak



Date: Friday, October 13, 2023, 7:00 PM - Sunday, October 15, 2023, 10:00 AM CDT

Registration starts Monday, August 14, 2023, at 8:00 AM MDT

https://bit.ly/SolarEclipse_CMP2023

The 2023 Great American Eclipse (Annular Solar Eclipse) will pass over our very own Camp Mitre Peak in October, 2023! We will have 85% totality (which is amazing)!

What better place to view a solar eclipse during the day and gaze into the Milky Way at night?

There will be hands-on activities for the girls to do before the eclipse and solar eclipse viewing glasses provided by council. There will be a hotdog roast with s'mores for dessert Saturday night for dinner! The girls also receive a custom GSDSW solar eclipse patch!

A few things of note:

- This is a Girl Scout only event - no tag alongs. Everyone participating must be a registered Girl Scout (Daisy - Adult) and attending adults must be background checked.
- There is limited cabin space. Cabin camping is on a first come - first served basis. If you wish your troop to be roomed in the same cabins, please register everyone at the same time. If you separately register participants, there is no guarantee you will be rooming together, or there will be available cabin space.
- If you have less people than can fill a cabin, you may be roomed with other participants.
- Leaders and adults - you must make girl: adult ratio whether you are cabin camping or tent camping.
- If any male chaperones attend, they will be housed in the LVP.
- You can tent camp - for a discount!
- All other meals (Friday dinner, Saturday breakfast and lunch, Sunday breakfast) and activities throughout the day are provided by you, just like troop camping.
- There will be a \$10 discount for any adult volunteer who would like to host an activity prior to the eclipse. Please pay the registration fee, contact info@gsdsw.org with your activity station, and upon approval, a discount refund will be applied to the registration.



Engagement



Renew Your Membership

Get your troop ready
for Back to Troop

Troop Compliance

Make sure your troop has a minimum of five girls and two adults in leader and coleader positions for the new membership year.

Troop Disbanding?

Please use the [Troop Disband Checklist](#).

Troop Reminder:
Please notify council of
any troop leadership
changes!



Key Dates

UPDATED!!

2023 - 2024 GSDSW Key Dates Calendar
There are important deadlines, programs,
and more listed for your reference.

IMPORTANT TROOP TRIP REMINDER

Updated [Trip and High-Risk Activity form](#)

Day trips that include a high-risk activity.

Submit completed form and any attachments to info@gsdsw.org at least two weeks prior to trip/activity. Applications received less than five days prior to the activity will automatically be denied as a Girl Scout function and troop funds may not be used.

Basic Trips (one or two nights).

Submit completed form and any attachments to info@gsdsw.org at least 30 days prior to trip/activity. Applications received less than 15 days prior to the trip or activity will be automatically denied as a Girl Scout function and troop funds may not be used.

Extended Trips (three nights or more).

Submit completed form and any attachments to info@gsdsw.org at least 60 days prior to trip/activity. Applications received less than 30 days prior to the trip or activity will automatically be denied as a Girl Scout function and troop funds may not be used.

Engagement

Register today. Space is limited.




gsdsw
PEARLS
Path to Empower Adults Reach Leader Success

Saturday, August 19, 2023
9 AM - 3 PM MDT
EPCC Northwest Campus
6701 S Desert Blvd, El Paso, TX

- Honor Troop Basics
- Shrinky Dink
- Volunteer Toolkit
- Religious Recognitions
- Taking it Outdoors
- Highest Awards
- Journeys
- Flags
- Troop Safety
- gsLearn

SWAG Food Guest Speakers
Adult Investiture Ceremony



Registration required.
Last day to register is Monday, August 14, 2023
<https://bit.ly/PEARLS81923>

\$12 PER PERSON*
*lunch and supplies included

Register today. Space is limited.



gsdsw
PEARLS
Path to Empower Adults Reach Leader Success

Saturday, August 19, 2023
9 AM - 3 PM CDT
ODESSA PROGRAM CENTER
5217 N. Dixie Blvd., Odessa, TX 79762

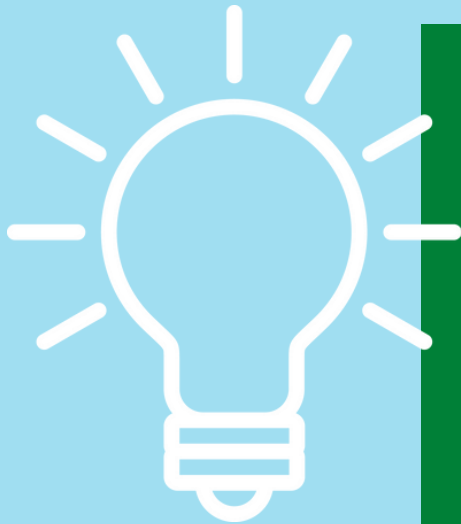
- First Aid/CPR class in the AM
- Girl Scout Ways
- Outdoors: Flag Ceremony
- Journeys
- Girl Scout Craft
- Girl Scout Songs & Games

SWAG Food Adult Investiture Ceremony



Registration required.
Last day to register is Monday, August 14, 2023
<https://bit.ly/3DiDOKy>

FREE
*lunch and supplies included



Tip of the month

Get Parents Involved

Setting clear expectations and creating a troop committee is key for a successful year. If you have a larger troop, these four essentials for managing a large troop are a must. Nervous about having your first parent meeting? Girl Scout leaders shared their top tips for running a successful parent meeting.



Attend a local community event near you, share Girl Scouts with others by setting up an informational table and earn a free patch by being a GSDSW Community Champion. All informational materials will be provided. Email info@gsdsw.org for more details.



Be a Community Champion and Earn a Free Exclusive Patch

Council Properties

Council Property Building Rental / Usage

All property / building rentals and usage must follow the process below:

- Submit request to info@gsdsw.org.
- Complete the rental agreement and submit it to info@gsdsw.org.
- Once approved and placed on our property calendar you will receive an email with further instructions.
- No rental / usage of GSDSW properties / buildings are approved without going through the complete process.
- If you are found to be using GSDSW property / buildings without council approval all future rentals / usage will be denied.



- If you rent or use any of GSDSW's buildings, you are responsible for checking all areas to ensure they are clean.
- Be sure you are wiping tables down to remove crayon/glue/etc., sweeping, or vacuuming, and make sure trash is put in the trash cans and clean recyclables are put in the recycling bins.
- Please make sure that there is no trash in the recycling bins. Take it with you and recycle it.
- Painting and messy projects should be done over tile or outside. Do not do these projects on carpet or on chairs with fabric covers.
- Please check the restrooms to be sure toilets are flushed before you leave. It has been found that the toilets are not being flushed or are being stuffed with toilet paper.
- If after your rental or usage it is found that a cleaning crew or plumber needs to be brought in, you will be financially responsible and future usage will be denied.

If you are interested in using or renting Camp Mitre Peak or any of our program centers for troop/service unit meetings or an event, contact us at info@gsdsw.org.

Alamogordo

Camp Mitre
Peak

Carlsbad

Deming

El Paso

Hobbs

Las Cruces

Midland

Odessa

Roswell

Silver City

White Spur
Hut

Around the Council

Girl Scouts of the Desert Southwest Career Opportunities

[Outdoor Program Manager](#) - Midland and Odessa
[Apply Here](#)

[Community Engagement Specialist](#) - Midland
[Apply Here](#)

[Fund Development Specialist](#) - El Paso
[Apply Here](#)

[Staff Accountant](#) - El Paso [Apply Here](#)

[Seasonal Membership Growth Specialist](#)

El Paso - [Apply Here](#)

Midland - [Apply Here](#)

Odessa - [Apply Here](#)

Interested candidates, please use the [Apply Here](#) link or send your resume to info@gsdsw.org

Retail Shops

Council Shop Hours*

El Paso

Monday – Thursday 9:00 AM - 1:00 PM MDT

2:00 PM - 6:00 PM MDT

(Closed for lunch 1:00 PM - 2:00 PM)

1st Saturday - 9:00 AM - 1:00 PM MDT

Las Cruces

By Appointment Only

Midland

By Appointment Only

Odessa

By Appointment Only

For locations, [click here](#).

Shop orders will be placed on the second Thursday of each month for special orders and items not in stock.

*Subject to change due to unforeseen circumstances.

**Patches, patches
and more patches**



El Paso Shop New Try On Section



GSDSW is represented at Pax Lodge World Center in London and at Our Chalet in Switzerland!

